

# ENVIRONMENTAL BURDEN DUE TO TOBACCO PRODUCT WASTE



## Objectives

The study was carried out to assess the environment burden in terms of plastic, paper, foil and filter waste, posed by various smoked and smokeless tobacco products at National and State levels.

## Methodology

A cross-sectional survey was conducted in 33 districts of 17 states and UTs across the country. After exclusion of duplicates, 200 unique tobacco products including 70 cigarette brands, 94 bidi brands and 58 smokeless tobacco brands were procured from across the country to ensure representation and generalizability from all the geographic regions of the country. Gross weight and segregated weights of the plastic, paper, foil and filter content were taken from the procured samples and were correlated with the data from GATS-2 survey to arrive at the final results.

## Prevalence of Tobacco Use

Current tobacco users in UK- 26.5%  
 Current Cigarette smokers in UK- 4.9  
 Current Bidi smokers in UK - 15.7%  
 Current SLT users in UK- 12.4%

\*Source: Global Adult Tobacco Survey II: India 2016-17 Report



Plastic waste produced by tobacco use is equivalent to 458930 standard plastic buckets

8873 trees are cut annually to be used for Paper packaging, with waste equivalent to the weight of 479958 notebooks



## Key Findings

### Total Annual Plastic Waste

- Cigarettes - 20.98 tonnes
- Bidis - 127 tonnes
- Smokeless Tobacco - 310.94 tonnes.
- Total annual plastic waste - 458.93 tonnes.

### Total Annual Paper Waste

- Cigarettes - 323.11 tonnes.
- Bidis - 108.09 tonnes.
- Smokeless Tobacco - 250.87 tonnes.
- Total annual paper waste 358.96 tonnes.

### Total Annual Foil Waste

- Total annual foil waste (Cigarettes) - 62.48 tonnes

### Total Annual Filter Waste

- Cigarettes - 13.48 tonnes.
- Bidis - 0.68 tonnes.
- Total annual filter waste - 14.16 tonnes

## Total annual waste by all tobacco products in the Uttarakhand State

Cigarettes - 420.05 tonnes  
 Bidi - 235.76 tonnes  
 Smokeless Tobacco - 561.82 tonnes  
 Total - 1217.63 tonnes

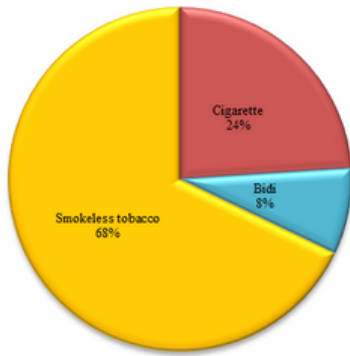


Filter waste produced is equivalent to 94121 standard adult sized t-Shirts

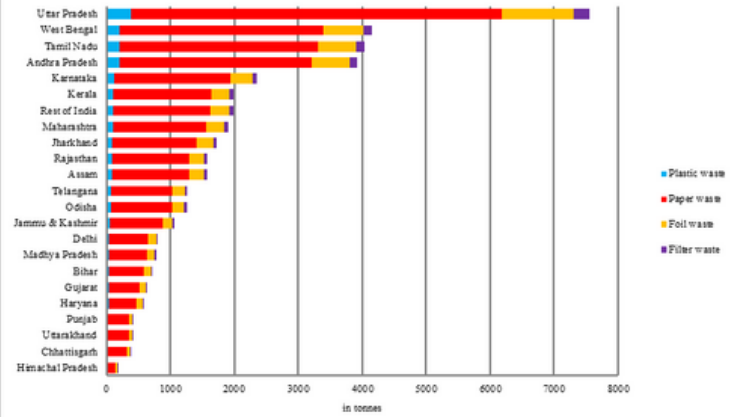


One Chartered aircrafts can be made of the aluminium waste produced annually

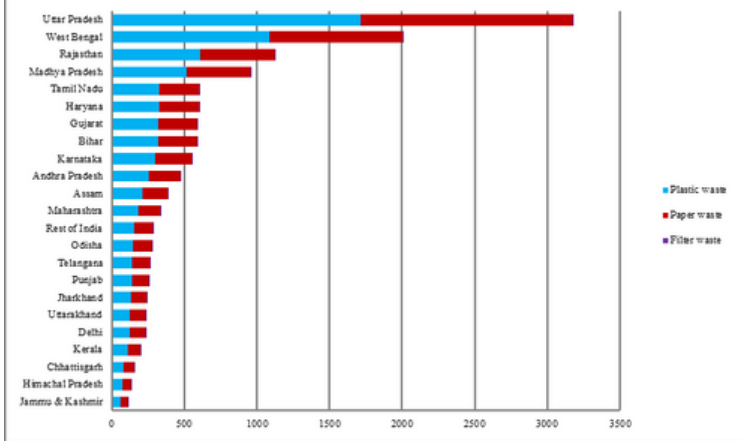
Contribution of different tobacco types to the overall tobacco waste (in %)



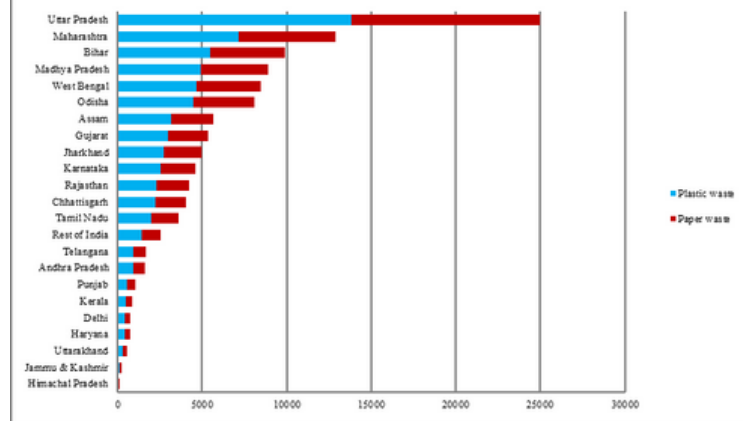
Distribution of annual waste by different components of cigarette (in tonnes)



Distribution of annual waste by different components of bidi (in tonnes)



Distribution of annual waste by different components of smokeless tobacco (in tonnes)



## Recommendations

- Tobacco product wastes are diverse in nature. A comprehensive policy deterrent and a financial levy is needed, that is borne by the manufacturers.
- Given the enormous cost incurred for cleaning of the tobacco product wastes (TPWs), greater sensitization of stakeholders for effective implementation of existing regulations and adopting stronger norms to reduce its environmental impact is need of the hour.
- No tobacco product fully complies with environmental laws. Tobacco companies and their shareholders must take full responsibility to reduce the environmental burden of their products.
- The violations of the existing environmental laws and policies related to solid wastes/packaging should be strictly monitored, reported and regulated to ensure compliance therewith
- Given the irreversible impact of plastics on the environment and the human body, the unnecessary plastic waste generated from the tobacco products, is needs stronger and urgent policy shift for its effective elimination.